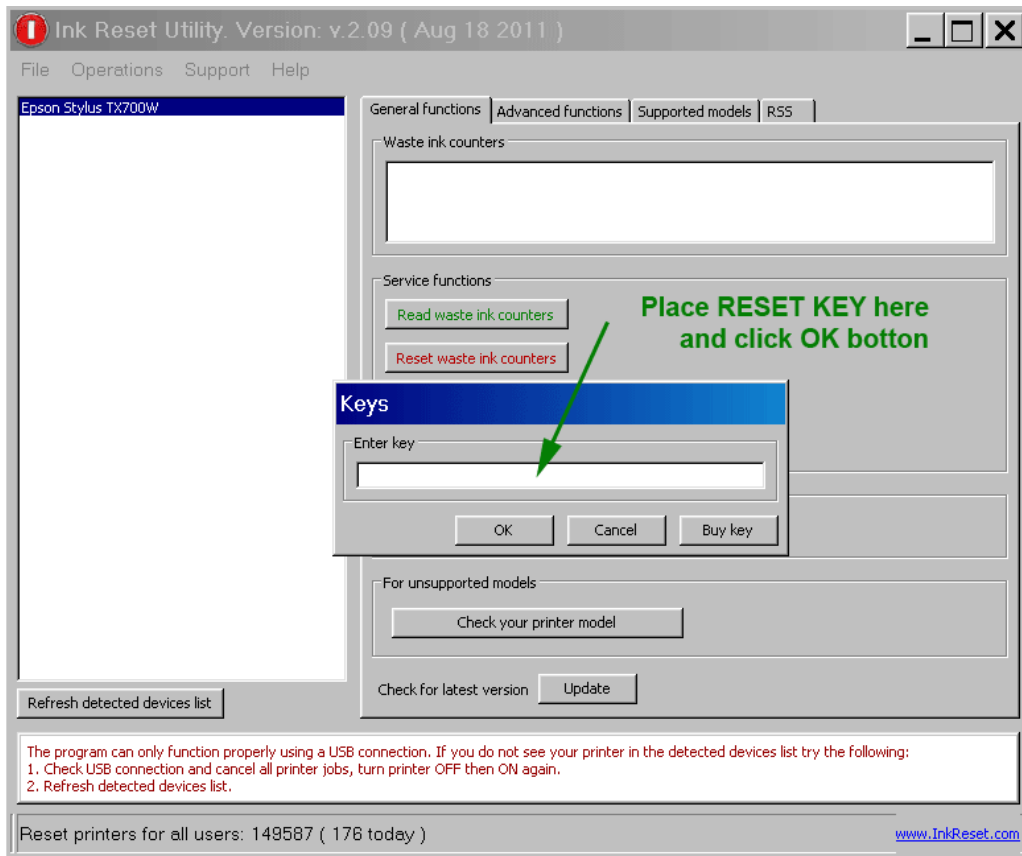


# EPSON Wic Reset Utility Key Gene



**DOWNLOAD:** <https://tinurli.com/2ivg7v>



- \*\*F1\*\* - Password Reset (1 try), \*\*F2\*\* - Password Reset (2 try), \*\*F3\*\* - Password Reset (3 try), \*\*F4\*\* - Password Reset (4 try), \*\*F5\*\* - Password Reset (5 try), \*\*F6\*\* - Password Reset (6 try), \*\*F7\*\* - Password Reset (7 try), \*\*F8\*\* - Password Reset (8 try), \*\*F9\*\* - Password Reset (9 try), \*\*F10\*\* - Password Reset (10 try), \*\*F11\*\* - Password Reset (11 try), \*\*F12\*\* - Password Reset (12 try), \*\*F13\*\* - Password Reset (13 try), \*\*F14\*\* - Password Reset (14 try), \*\*F15\*\* -

---

Password Reset (15 try). - **A** - Back to the previous page, **S** - Switch between screens or pages, **W** - Back to the main settings menu. - **Enter** - Enters the password, **Backspace** - Deletes the character in front, **Caps lock** - Turns off the caps lock, **Scroll lock** - Turns off the scroll lock, **Num lock** - Turns off the num lock, **Escape** - Exits the password reset, **Start** - Turns on the backlight, **Menu** - Turns on the menu and backlight, **F10** - Resets the password. To reset the password from the command line, you can use these commands: `` wmic nicap resetpassword [password]

**Example**: wmic nicap resetpassword F15 **Output**: ``txt ## See also [WIC command reference](wic-cmd.md) Q:

Where can I get Android OS source code for a specific device? I'm interested in getting the Android source code for the android-samsung-galaxy-s2. I have found the necessary Google Code repository, 82157476af

Related links:

[Commando 2 full movie in hindi hd 1080p](#)

[Nuip Fritzbox](#)

[skyramacheatenginedownload](#)